

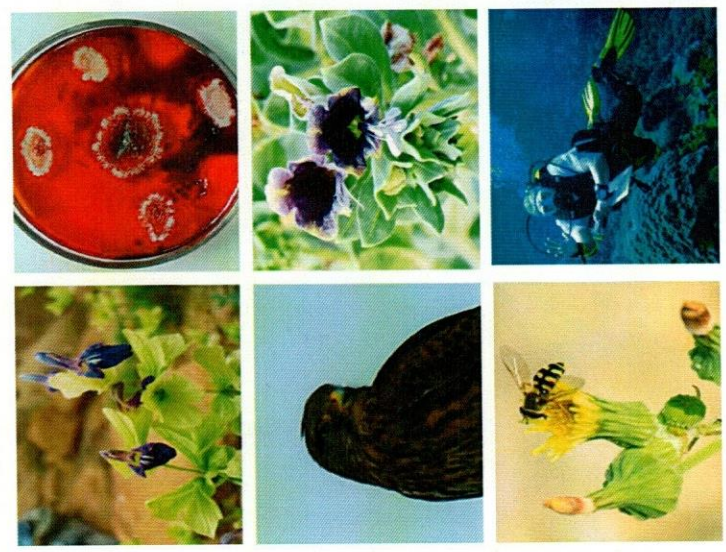


International Master in Ecology Program



I. MSc.

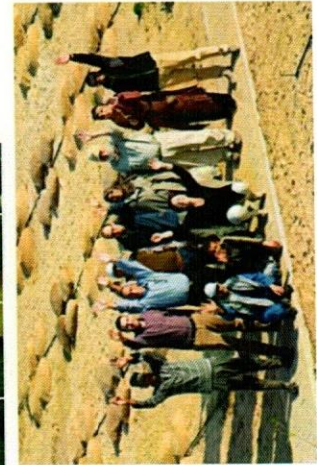
International Master in Ecology Program



www.satis-eg.com

CONTACT PERSON

Prof. Abdelraouf A. Moustafa
 Botany Department, Faculty of
 Science, Suez Canal University
 41522, Ismailia
 Egypt
 Phone: +201211182111/01003686076
 E-mail: raoufmoustafa2@hotmail.com



CURRICULUM

The program consists of 4 semesters (2 years) including thesis. Specialization is offered with individual choice of elective courses, i.e. in molecular, behavioral, vegetation, marine or soil ecology as well as conservation biology, risk assessment or ecological modeling. Downwards are the modules of the program; the blue ones are the compulsory courses and the orange are the electives.

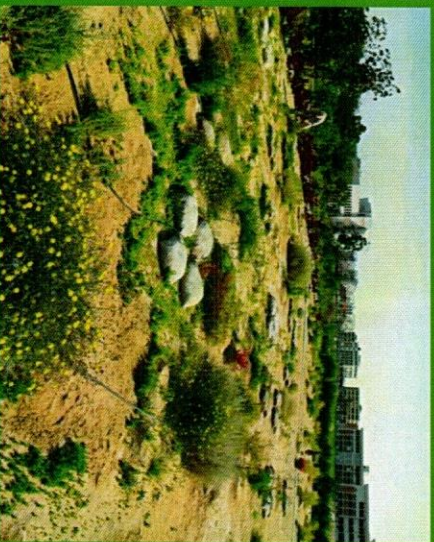
| Week | | | | | | | | | | | | | | | | | |
|--|---|---|---|---|---|---|--|------|----|---|----|------|--|---|------|-------------------------------------|------|
| 1 | 2 | 3 | 4 | 5 | 6 | 7 | 8 | 9 | 10 | 11 | 12 | 13 | 14 | 15 | 16 | 17 | |
| 1. First semester (Fall semester) | | | | | | | | | | | | | | | | | |
| Concepts of ecology (Module ME101, 3 CP)* | | Experimental design and data analysis (Module ME102, 9 CP)* | | | Earth sciences (Module ME103, 6 CP)* | | | Exam | | Molecular ecology: (Module ME104, 9 CP)* | | | Current topics in ecology & mentoring 1 (Module ME105, 3 CP)* | | Exam | | Exam |
| 2. Second semester (Spring semester) | | | | | | | | | | | | | | | | | |
| Population ecology of plants and animals (Module ME201, 9 CP)* | | Behavioural ecology (Module ME202, 6 CP) | | | Exam | | Applied ecology and conservation biology (Module ME203, 6 CP) | | | Soil and principles of ecosystem ecology (Module ME204, 6 CP) | | Exam | | Ecological excursion and field course (Module ME205, 6 CP) | | Lab safety (Module ME206, 3 CP)* | Exam |
| Research Project (Module ME207, 12 CP)* (The project may be started in any of the blocks or after the teaching term) | | | | | | | | | | | | | | | | | |
| 3. Third semester (Fall semester) | | | | | | | | | | | | | | | | | |
| Ecophysiology (Module ME301, 6 CP) | | Microbiology of terrestrial and aquatic ecosystems (Module ME303, 6 CP) | | | Exam | | Grant proposal and defence (Module ME306, 6 CP)* | | | Spatial data analysis and GIS (Module ME307, 6 CP) | | Exam | | Current topics in ecology & mentoring 2 (Module ME310, 3 CP) | | Exam | Exam |
| Sustainability research (Module ME302, 6 CP) | | Introduction to modeling (Module ME304, 3 CP) Biodiversity in ecosystem (Module ME305, 3 CP) | | | | | | | | Coral reef ecology (Module ME308, 3 CP) Environmental risks and ecotoxicology (Module ME309, 3 CP) | | | | | | | |
| 4. Fourth semester (Spring semester) | | | | | | | | | | | | | | | | | |
| Master thesis and Defense (Module ME400, 3 CP)* | | | | | | | | | | | | | | | | | |

Eligibility to Apply

To apply for the program, you must have a Bachelor's degree (or equivalent) in Biology, Ecology or a related field. Applications should include a CV, your Bachelor's degree, a letter of motivation, a proof of proficiency in English (Minimum 110 IBT TOEFL or European C1-level), and a reference letter. The program starts in October.

To apply you have to fill the application form on the website. For any questions on the application, selection procedure, and tuition fees, please refer to our website at:

www.satis-eg.com



ReviTec® site of the SATTIS project, at Ismailia

Why MSc in Ecology?

The Master of Ecology is a springboard to leadership for environmental professionals; where Ecology is a bio-science that studies the interaction between organisms and the environment in which they live both biotic and abiotic. It analyzes the structure, function and productivity of the supra-individual bio-systems, the populations and the mixed systems, known as the ecosystems. It also deals with environment protection, animal and botanical biodiversity, genetic diversity, eco-physiology, modeling, molecular ecology, earth science and climate-change concerns.

What will you gain from this Master?

The program gives students a powerful understanding of where the sciences overlap and inform policy while providing insight into how policy is implemented and affects environmental outcomes. Students will integrate core principals of environmental systems and learn how to apply them to real-world management issues, particularly in the conservation field and in the assessment of human impact in the natural world. The students will be able to articulate a rationale for environmental and sustainability education and reflect upon their role in the ongoing development of the field.

During the third term, students will have the possibility to study at our partner university in Germany (Bremen Univ.).

Why come to Suez Canal University, Ismailia, Egypt?

The university was established on 1976, in Ismailia city. It is evaluated as one of the top ten universities in Africa and the first in Egypt according to the recent Times Higher Education web site (2016). Suez Canal University seeks to be a center of excellence in different research fields in the Arab and African worlds, through its accredited faculties; as the faculty of science in which the program will be imparted. Ismailia is located on the pathway of the Suez Canal. The city is situated almost in the middle between the city of Portsaid in the North and the city of Suez in the South, it is known in Egypt as "The City of Beauty and Enchantment".

The piloting MSc. study program is based on the transfer of a research demonstration and education approach developed by the University of Bremen for the restoration of degraded soils and the afforestation of lands in the (ReviTec®) site, which is the fifth site all over the world.

